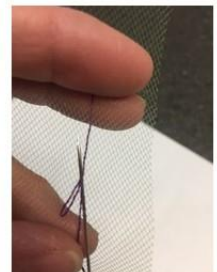
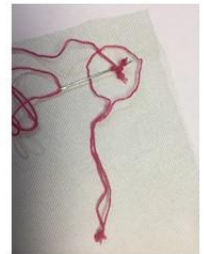




Leaves, flower, feathers, and branch are all embroidered with one or two threads on illusion tulle. Once embroidery is completed the items are cut from the illusion and attached to fabric. This is a way to create a light and airy look to give depth to your art design.

Piece inspired by Richard Saja
Historically Inaccurate
<http://historically-inaccurate.blogspot.com/>



Historically Inaccurate
<http://historically-inaccurate.blogspot.com/>
Richard Saja